

Greenstar 2 2600/ Greenstar 3 2630

Documentation Setup: Planting



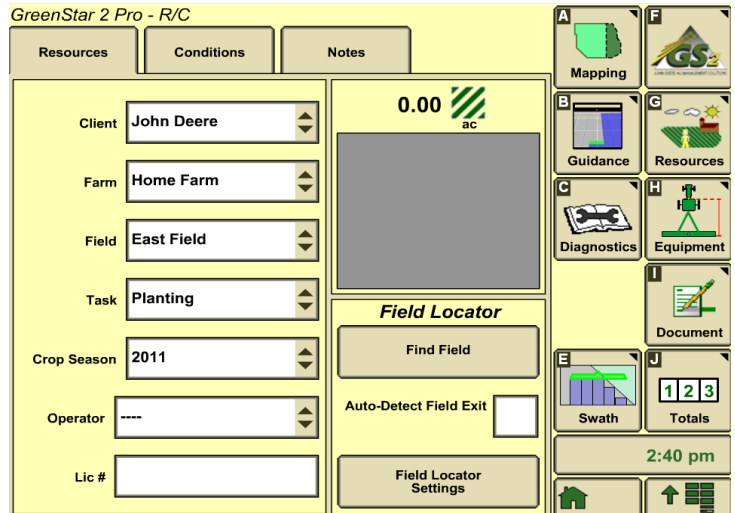
STEP ONE:



STEP TWO:

- Input/select Client name
- Input /select Farm name
- Input/select Field name
- Select Task
- Select Crop Season

*** Resources can also be set up via home screen***



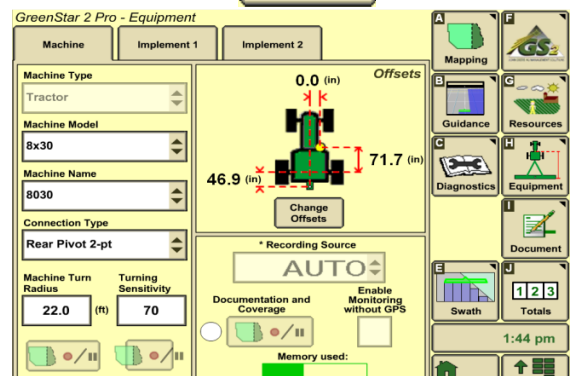
STEP THREE:



STEP FOUR:

- Input/select model of machine
- Input/select name of machine
- Select connection type

Select Change offsets and follow on screen instructions

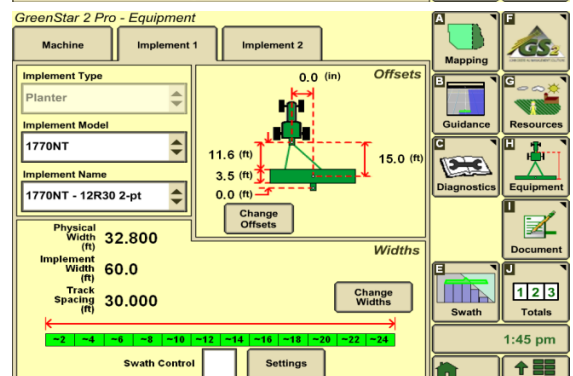


STEP FIVE:

- Input/select model of implement
- Input/select name of implement

Select Change offsets and follow on screen instructions

Select Change widths and follow on screen instructions



Adjust track spacing accordingly for GPS accuracy

STEP SIX:



STEP SEVEN:

Select Seed Type

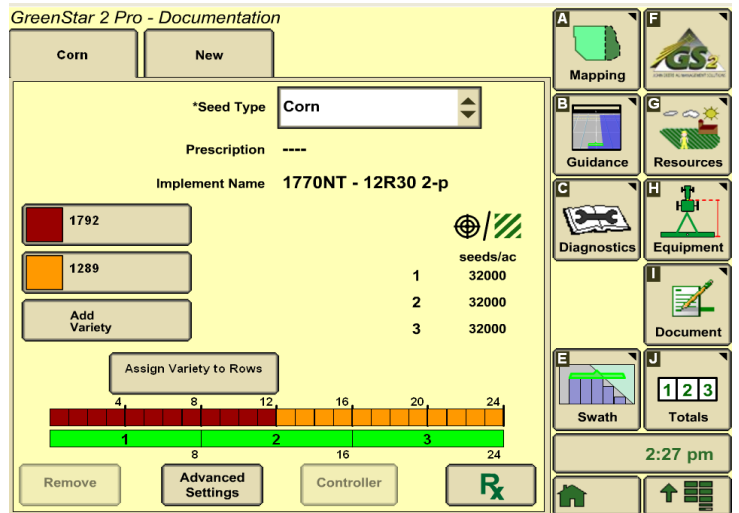
Add Variety →



Select/Input the Brand
 Select/Input the Variety
 Select the color

To save Changes

Select Accept →



For Split Planter Documentation Select Assign Variety to Rows →



STEP EIGHT:



Map Settings →

STEP NINE:

Select the Foreground as Corn
 To see an as applied variety map

To save Changes

Select Accept →

